



Cascade Pacific *Plymouth*® Club

Affiliate of Plymouth® Owners Club, Inc.

*Dedicated to the
Preservation and Restoration of
Plymouths
25 years and older*

Volume Two, Issue Seven

August 2001

Member Profile

The Tiffany's and Their 1928 Plymouth

Last month we introduced you to this beautiful 1928 Model Q Roadster. This month we continue its life story.



The Tiffany's bring their 1928 Model Q home

Allen Tiffany is a roofing contractor in southwestern Washington and Oregon, and Sharon is director at the Columbia George Interpretive Center in Stevenson, Washington. About three years ago Allen and one of his friends dropped by one of our respected old car dealers, Memory Lane Motors, to do some re-kicking and he spotted an old Plymouth in the corner. What is that he asked?", and Dale Matthews replied, "It's a 1928 Model Q Roadster". It was

love at first sight. After convincing Sharon they should buy it, they brought it home on a trailer (see photo on left). It has made

their lives richer as over the years they have had the car in a parade, several car shows and have met many new people who share their interest in old Plymouths.

Last March, the Tiffany's heard about our Ply-

mouth Club and joined. At that meeting Bob Ripley, who had come 200 miles for the meeting, introduced himself and son Mark and named the cars he

had owned. He then related that he had once owned a 1928 Model Q Roadster and had always wondered what happened to it since he sold it. Allen Tiffany stood up and said, "I have it!" The Ripley's and the Tiffany's had plenty to talk about after the meeting.

Not only do the Tiffany's own a great American car that is valued in the Old Car Price Guide at between \$18,000 and \$26,000, but they gained a lot of information about it and made another new friend who also loved their car.



Tiffany's beloved 1928 Model Q

TECH TALK

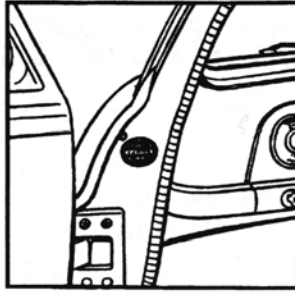
Where's your Number?

In case you did not know, or missed the information in a recent *Plymouth Bulletin*, here is where to look for the numbers on your Plymouth.

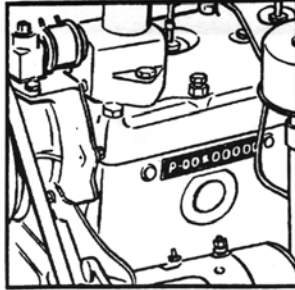
Vehicle number: on models P-17 through P-20, and late model P-15 vehicles, the vehicle serial number is on a plate attached to the left front door hinge pillar post. On early model P-15 Plymouths the plate is attached to the right door post.

Engine number: stamped on a boss located on the left front side at the cylinder block.

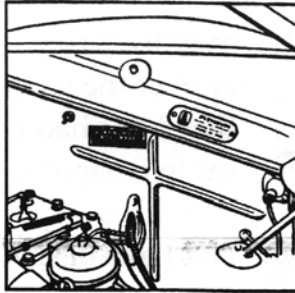
Body number: stamped on a plate attached to the left side of the engine side of the dash.



Vehicle Number, P-17 - P20



Engine Number



Body Number

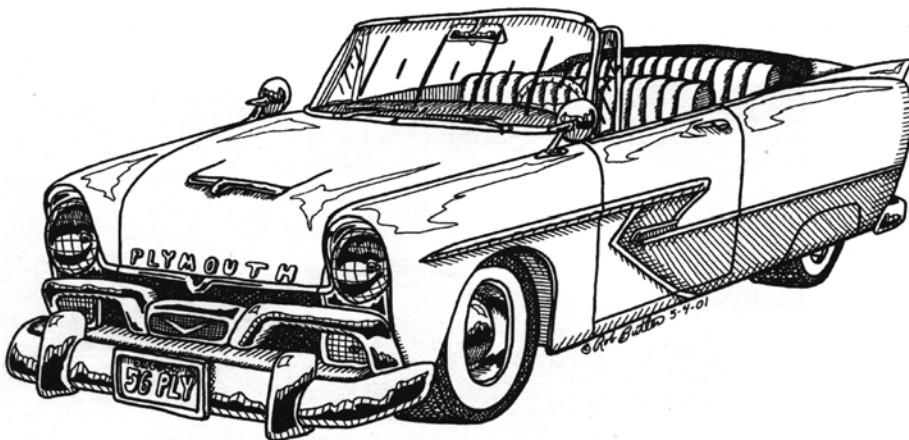
Spark Plugs

Pat Brost reports that cars needing Champion C-4 plugs (including 1928 Plymouth and many other makes) can get them at Model A Ford parts dealers.

Waiting for You



It's possible to restore but will take a lot of doing. Everything is there but front & rear bumpers. This was recently found in an old State warehouse and is now owned by a local businessman. Interested in a real challenge? Contact the Editor.



1956 Belvedere Convertible
by Rob Butler

Committee Chairs

We now have a full slate of committee chairs.

Finance	Mel Nilson
Membership	John Sweeney
Legal	Frank Anthony
Technical Advisors	Bob Dimich
Refreshment/Setup	Dennis Mowery
Newsletter	Tom Shepherd
Activities	Jeff Jolly

Additional points of contact include:

East-West Tour	Jerry Klinger
	Jim Foreman
Newsletter Editor	Earle Culbertson

RECORDING SECRETARY



Dave & Vickie Williams with their '47. Vickie is our new Co-Recording Secretary and we are very appreciative for her dedication and volunteer spirit! Vicki will share this position with another stalwart, Viki Davidson

Dealers Corner



Underneath all that protective rust lies a 1939 Plymouth waiting to be brought back to life. They have two in Vancouver, WA at the All American Classic Salvage Yard. It's the favorite car of Chuck Hamaker of Seattle. Look for more on Chuck's '39s in future issues.

EAST-WEST TOUR CO-CHAIR



Temporarily out of their 1962 Sport Fury, Ann & Jerry Klinger spend the afternoon in their 1999 "Folders". Jerry and Jim Foreman will co-chair the East-West Tour in 2003. It's a huge job but these guys have the talent.

Our Family Photo Album

ACTIVITIES COMMITTEE CHAIRMAN



Activities Chair Jeff Jolly with his 1949 2-door sedan. Jeff is Property Facilitator for Clackamas County, Oregon.

REFRESHMENT COMMITTEE CHAIRMAN



Center of left photo is Chairman of the 12 member Refreshment and Facility Committee, Dennis Mowery. He is shown here with Jeanne and son Travis. Travis is an Eagle Scout and makes most



meetings with his parents. The photo at right is their 1948 P15 4 door Plymouth. Dennis and his committee have the coffee on early so it is ready when you arrive.

Sharon & Allen Tiffany



See cover for their 1928 Model Q



"I could have purchased all three of these 1946-'48s for only \$1,000 but didn't move fast enough". (Name of procrastinator withheld in the interest of protecting an otherwise astute businessman's reputation!)



This beautiful '50 convertible belongs to Bill & Dolores Call. The other beauty is Dawn Procriv, a journalism major at the U of O. Dawn represented Metro East in the Miss America Scholarship program. Several CPPOC members participated in the Milwaukie Festival Parade and we received a Blue Ribbon for our participation

Two Upcoming Cruise Events

- August 19, 9:00 am to 4:00 pm. *Care Crusin'*, sponsored by Finley-Sunset Hills Mortuary. A fundraiser for The Care Foundation. For details please call (503) 691-1105.

- September 2, 12:00 to 5:00 pm. *"Show and Shine"*. Sponsored by Columbia Gorge Interpretive Center. For specifics please call (509) 427-8211 or (800) 991-2338

"Perfection" the "Father" of Invention

Several years ago I completed my first ground-up restoration of a 1949 Plymouth 4 door. I had not intended a show car, however when completed I knew this car could compete with the best in its class. After a third at Forest Grove the first time out, I continued to make improvements. After that it never took less than *First in Class*, one time earning 100 points (only I knew where the shortcomings were and I wasn't telling) and later was a contender for *Best of Show* at Forest Grove. Since the car was sold I have had the good fortune of staying in contact with the subsequent owners, some 17 years later! It now resides in Beverly Hills, California.

process there were some parts, either missing or very difficult to locate, you know the dilemma. In pursuit of perfection this prompted me to reproduce those items for the particular restoration I was working on and eventually expanding the application to other Plymouths, MoPars and beyond. I continue the production of some of the items and advertise them in the National Plymouth Bulletin each month, as most of you probably know.

by Paul Taylor

Paul was featured in our April 2001 issue. Following are descriptions of the parts Paul produces, extracted from his ads. If you know of a source for hard-to-get parts (either your manufacture or someone else), please share that knowledge with the club.

Reduce vapor lock problems with a fuel pump heatshield kit for Ply & Dodge cars & trucks. 1937-54 and later 6 cyl. Exact reproduction of the original. Kit includes shield, mounting stud and fasteners, ready for installation

Air cleaner support brackets reproduced to exact original for '39-54 Ply, Dod cars & trucks, DeS, most Chrys. Steady brackets for most heavy duty and bath type air cleaners.

Gloveboxes, reproduced with original style materials including original color and style of "blown-on" flocking. Most gloveboxes \$85 plus 10% postage. Have some patterns. Send old glovebox (or pattern & opening dimensions, indicate flocking color desired.

Prices & details available from:
**Paul Taylor, 32535 SE Pipeline Rd.
 Gresham, OR 97080.
 (503) 663-4335, leave message**

To add or renew a *cars/parts* ad, or to suggest an interesting story, please contact Tom Shepherd: (503) 833-8966
 or e-mail: tjsves@yahoo.com
 Larry Catt at: (360) 896-6694
 or e-mail: lacatt@gateway.net
 Bob Dimich (503)252-4498
 or Earle Culbertson at: earlec@gte.net



D.J. Freeman with daughters Laura & Ann and his 1938 "Ugly Duck" Plymouth business coupe. The '38 was the "Jubilee Plymouth" and this one was the "Peoples Choice" at last year's NAPA Cruise-in in Corvallis. We were pleased to feature this auto in our June issue.

Notes from the July 24 Meeting

Incorporation papers are nearly ready to file. Officers named to initiate the non-profit club are:

President	Bill Call
Vice President	Larry Catt
Secretary	Jeff Jolly

The Board will meet later to select a slate of officers to serve beginning in January, 2002.

A great big vote of thanks to the volunteers to fill needed positions:

Treasurer	Dolores Call
Recording Secretary (co-volunteers)	Viki Davidson Vicki Williams

The Finance Committee has set the dues for a bare-bones operation. Dues will be \$20 per year, payable in December, for the year beginning in January, 2002, but fund-raisers will be needed to augment this.

Membership now stands at 105 with several additional applications on the way in!

Dan Tracy from **Cook's Brake Service** was the speaker. Cook's was founded in 1935 by Harold Cook when he straightened wheels. Dan's dad bought the firm in 1982 and they do brakes for *all* cars, new & old.

His #1 word, "Brake Fluid"! Flush your brakes annually, even on new cars. A little bit of brake fluid is cheap insurance to avoid an expensive repair job from contaminated brake fluid.

Dan can be found at 830 S.E. 46th Ave. (at Belmont). Or call him at (503) 232-6440.

P15-D24.com

We mentioned this web site in an early newsletter, and thought it would be good to do it again for the benefit of new members. It is maintained by a member of the national Plymouth Owners Club, and is really well done! It is focused on '46-'48 Plymouths and Dodges because of the great commonality between the two cars. This year-group represents the largest number in our club. The site covers everything from reference information, maintenance and tech tips, enhancements, buy/sell, parts list, photo gallery, and a forum to discuss problems and solutions. While it is dedicated to the '46-'48 models, it will also be of interest to

members with Plymouths of other years. Much of the information, particularly maintenance and the forum are applicable to many years.

The "**Options**" section includes information to show that buyers were economy minded in the '46-'48 years. These Economy Engine Packages were available:

- GP1 (\$4.25) 1 inch bore carb, smaller intake manifold, 3.73 ratio rear end
- GP2 (?) Same as above, but with hardened steel throttle stops and manifold heat shield.

One of the sections included this carburetor information:

'39-'41 Plymouth : Carter (Ball & Ball) D6A2

'42-'48 Plymouth : Carter (Ball & Ball) D6G1

The "**Enhancements**" section includes a discussion of several things that are considered improvements in our cars, from reliability and safety standpoints. These include the Optima battery (which many of our members use), radial tires (also used by many members), silicone brake fluid, air shocks, and quartz clock conversions (not a safety item, unless you were supposed to be home by a specific time).

Try it—You'll Like It !

Plymouth Parts/Cars To Sell

1934 PE 2-dr. Runs great. Asking \$5,000

Ron Frey (503) 772-9841

1963 Valiant Signet 200 convertible.

Condition good except for some body rust. Runs and drives great. 225 six w/ 3 speed push button trans. \$1,400

Ben Hall (503) 408-1726

hbhall@hotmail.com

Beautiful NORS chrome locking gas cap with 2 keys. Fits the following: '53-'54 Plymouth (except station wagons) and MoPar. Also '58-'60 Edsel, '66-'67 Fairlane 500, '53-'63 Ford (except Fairlane 500). \$15.00

Larry (360) 896-6694

lcatt@gateway.net

Upcoming Events

August 28 - Regular monthly membership meeting (the 4th Tuesday), 6:30 kick tires, 7:00 meeting - Agenda: "Automotive Wiring", Tim Winchell

August 7 - Board of Directors Meeting, 7:00 pm at Bill Call's shop. All members are welcome to attend.



1965 Fury III. Runs 100%. Could be a show car. See to appreciate. Al Wilson (541) 247-7403

The Corner Store

Plymouth Parts/Cars For Sale

1933 PC Engine with bell housing, new clutch plate and pressure plate. This engine ran in 1995. Needs rebuilding. Holds good oil pressure. **Also 2 Transmissions** for the same '33 PC. One is good, the other has a noisy first gear. Let's talk price - Rich Von Allmen (503) 762-7857

1959 4D Wagon Flathead 6. 3 speed (turns over freely). Complete project \$750.00

Tim (503) 620-8438

Rememer to sign up at the meetings for an ad in this space.



**Cascade Pacific
Plymouth® Club**

Affiliate of Plymouth® Owners Club, Inc.

P.O. Box 2988

Clackamas, OR 97015

FOUNDED 1957